



GISAL

Smart city platform for public street lighting management



Location-based inventory (GIS)



Energy saving management



Real-time information



Field mobility support



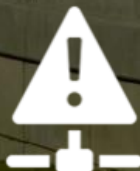
All-in-one maintenance management



Custom reports



Energy consumption simulation



Custom alerts



Compatible with different manufacturers

Ronda de Poniente 19
Edificio Fiteni VI
Tres Cantos, Madrid, Spain
+34 91 806 34 50

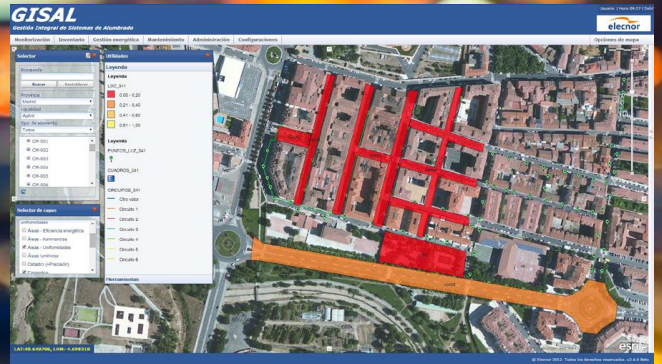
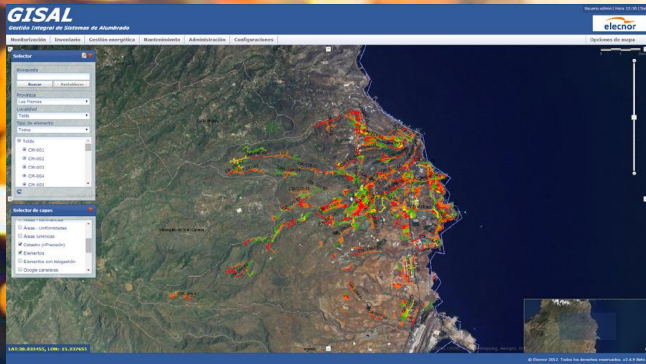
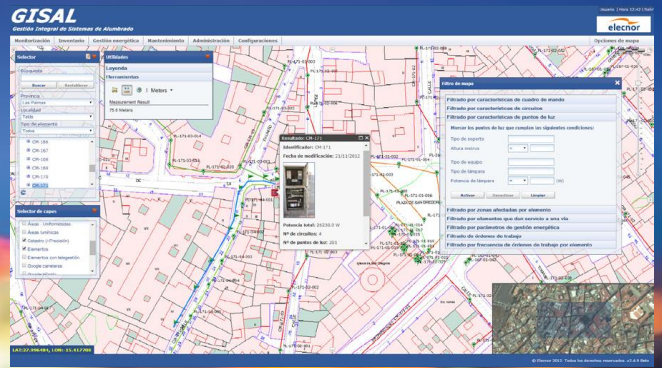
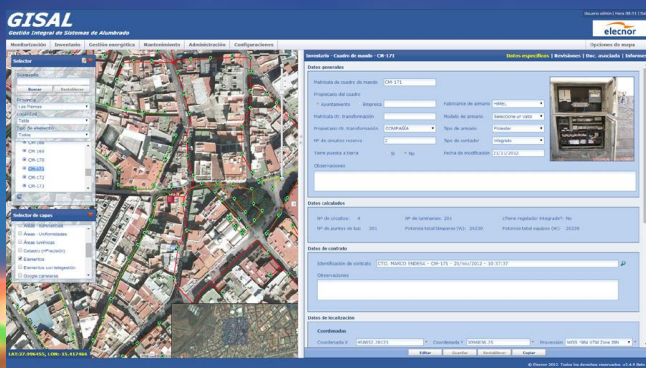

deimos
elecnor group

www.elecnor-deimos.com

info@elecnor-deimos.com



@ElecNorDeimos



GISAL is a **Smart City platform for public street lighting management** developed by Elecnor Deimos. The main component of the tool is the **inventory management** module, based on a geographic information system (GIS) that allows **identifying the location** of the components of the system. This module also provides a **better cost control** of maintenance and the **management of the human resources** responsible of public street lighting maintenance.

Above this module lies the **remote management** system. This subsystem monitors the basic elements and enables comprehensive control of the state of the components, based on a complex mechanism of **configurable alerts** and allows acting on them through the remote management subsystem, which **can be integrated with different manufacturers** of public lighting systems.

Finally, the information module provides **all kinds of reports, simulations, consumption estimations and billing**, generated according to the data collected in real time by the components of the system.

GISAL provides the capacity to achieve **greater energy efficiency** focused on **reducing costs** in Public Street lighting systems as well as **better planning** of the activities of maintenance. All this are shown on a **friendly and accessible web interface**.

Main Features

- **Inventory of the elements and components** of the Public Street Lighting, including 3D position and physical relations between items.
- **Real time information** for the main professionals involved (citizens, street light operators, politicians, public managers...).
- **Alarms and events** are triggered automatically.
- **Simulation of energy savings**, prediction and optimization of electricity consumption are available too.
- **Maintenance module** with workflow control, real time failure detection, case assignment and follow up, cost and response time control.
- **All kind of reports** related to the state of the elements and users.
- **Access control** for different user profiles.